



# Anti-DDoS

**MTN Business**  
#BusinessDoneBetter





## Introduction

Protect Your Business. Maintain Uptime. Ensure Resilience. In today's digital world, uninterrupted access to online services is essential for business continuity and customer trust. As cyber threats grow in scale and sophistication, Distributed Denial-of-Service (DDoS)

attacks remain one of the most disruptive tactics used by malicious actors. MTN Anti-DDoS Solution is a powerful, carrier-grade protection service designed to safeguard your digital assets, applications, and infrastructure from volumetric and sophisticated DDoS attacks in real time.

With **MTN Anti-DDoS**, customers benefit from uninterrupted service availability, reduced operational risk, and enhanced security posture, all backed by MTN's 24/7 managed security support.

# How it works

**MTN Anti-DDoS** is a fully managed security service that protects your business from DDoS attacks, keeping your systems online and secure even during an attack. Here's how it works:

**Always-On Network Monitoring** - MTN continuously monitors internet traffic across its network and your organization's connection points. The system inspects traffic patterns in real-time to detect anomalies that could signal a DDoS attack.

**Threat Detection Using Global Intelligence** - Our system leverages Arbor's ATLAS Threat Intelligence and other analytics to identify known DDoS signatures, zero-day tactics, and volumetric spikes. It distinguishes between legitimate and malicious traffic.

**Automatic Attack Detection & Redirection** - Once a threat is detected, traffic is instantly redirected to scrubbing centers — either on premises (within your organization) or in the provider network — where malicious packets are filtered out and clean traffic is sent to your servers.

## Multi-Layered Mitigation

The MTN Anti-DDoS solution neutralizes all major DDoS techniques, including:

- Volumetric, Protocol, Application-Layer and Reflection & Amplification Attacks

## Real-Time Visibility & Reporting

Customers receive:

- Attack alerts and analytics
- Post-event reports for audits and compliance

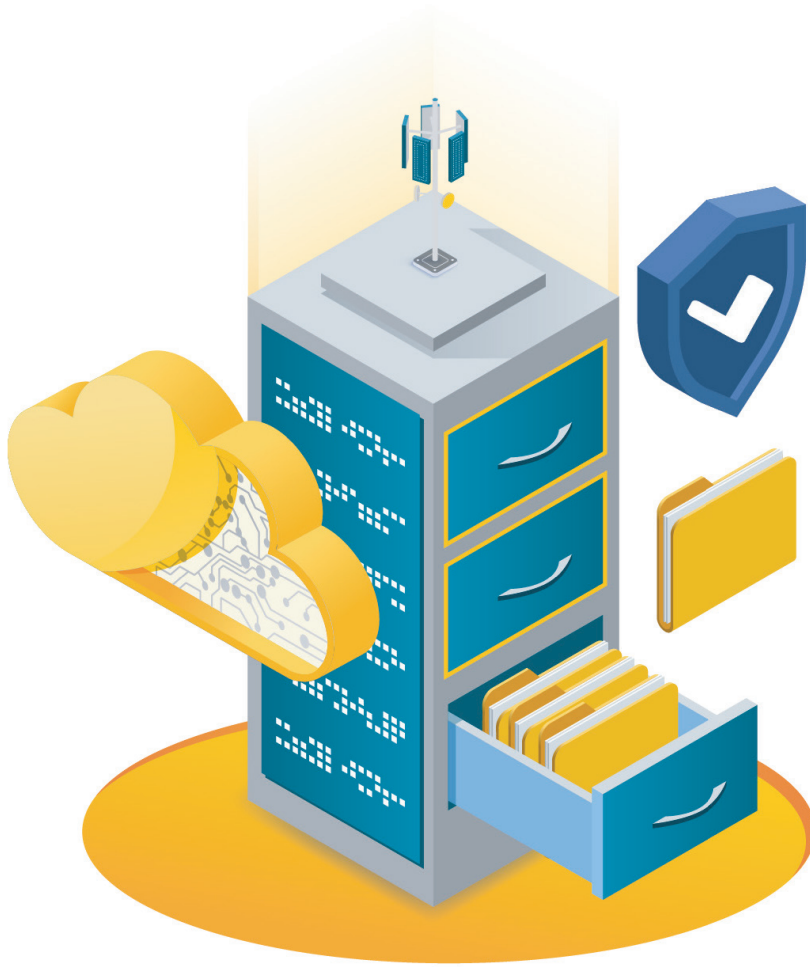
## Fully Managed by MTN Cybersecurity Experts

No in-house expertise required, MTN's Security Operations Center (SOC) handles configuration, response, and support 24/7.



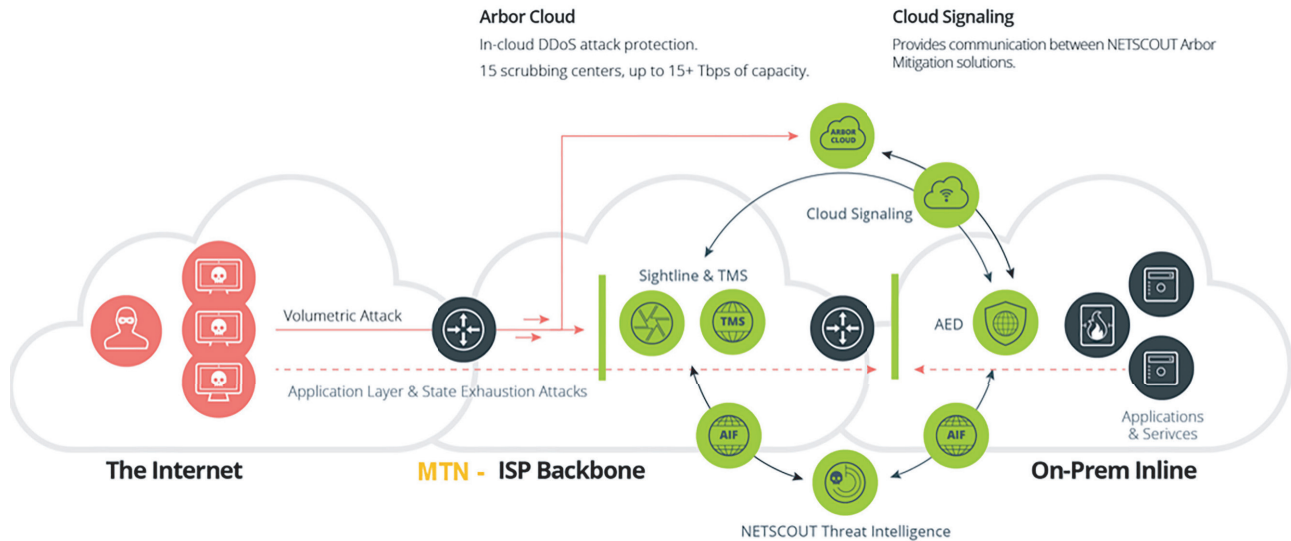
# Value Proposition

Protect your business with MTN's Anti-DDoS Solution a powerful, always-on defense that stops attacks before they disrupt your network, ensuring up time, performance, and peace of mind.

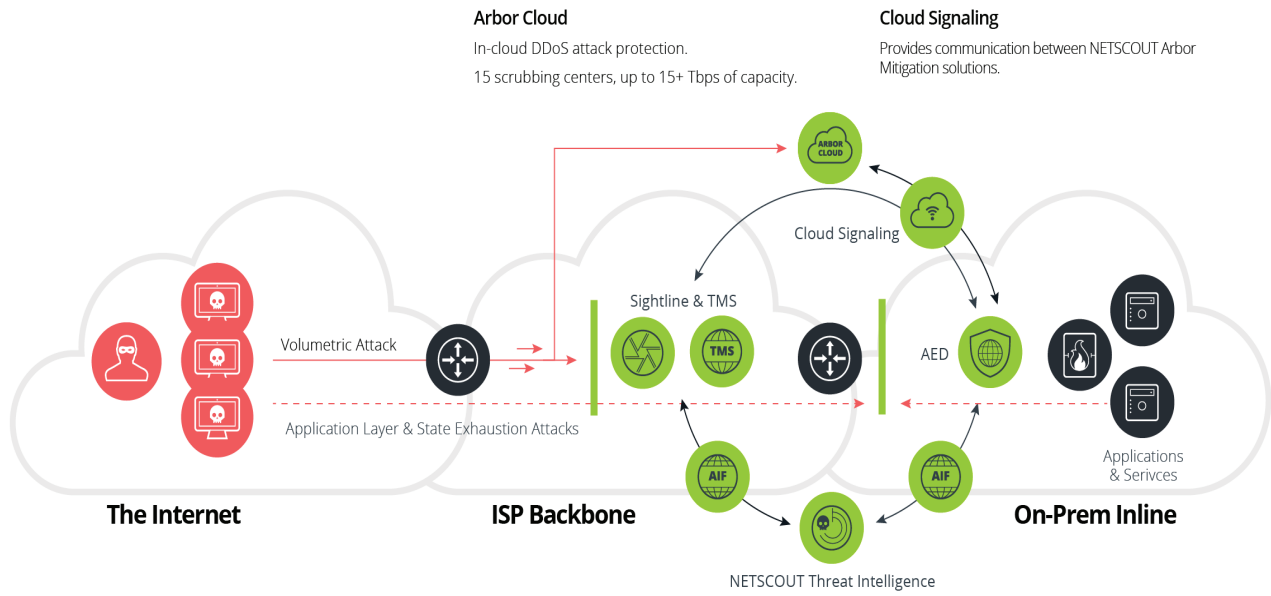


# Technical Drawings / Diagrams

## Cloud-based - Volumetric DDoS Mitigation Package



# Full-on DDoS Mitigation solution package



## Arbor Cloud

In-cloud DDoS attack protection.  
15 scrubbing centers, up to 15+ Tbps of capacity.

## Cloud Signaling

Provides communication between NETSCOUT Arbor Mitigation solutions.

## Sightline & TMS

Automated detection, out-of-band surgical mitigation (up to 400G per device); can be 100% virtual.  
Used by many MSSPs for in-cloud DDoS protection services.

## NETSCOUT Threat Intelligence

Global visibility and threat intelligence.  
ATLAS Intelligence Feed (AIF) arms products with latest global, actionable, threat intelligence.

## Arbor Edge Defense (AED)

Always-on protection (up to 200G per device); from inbound and outbound threats (i.e., DDoS attacks and IoTcs).  
Cloud signaling upstream for large attacks.



# Product Options & Features

## **MTN - Volumetric DDoS Mitigation Package**

- Key Features Across All Packages:
- Multi-vector DDoS detection
- Attack analytics & logs

## **Full-on DDoS Mitigation solution**

- 1.On-Premises Detection & Prevention
- Real-time threat detection at the edge
- Automatically blocks inbound and outbound threats before they enter the internal network.
- Always-on inline protection against low- and mid-volume attacks.

## **MTN Scrubbing for Large-Scale Attacks**

- Seamless redirection of high-volume attacks to MTN's scrubbing centers.
- Automatic cloud failover ensures minimal downtime.
- Handles volumetric, application-layer, and multi-vector DDoS attacks.

## **Full Network Visibility & Reporting**

- Visibility into both ingress and egress traffic.

## **Threat Intelligence & Automation**

- Real-time updates to block emerging threats and attack vectors.

## **High Availability & Redundancy**

- Dual-layer protection: customer edge and provider redundancy.
- Always-on or on-demand mitigation modes available.
- Suitable for critical services with zero-downtime tolerance.

# Benefits

## **End-to-End Managed Protection**

- Full-service solution: from detection, mitigation, to reporting.

## **Fast Response, Minimal Downtime**

- Real-time traffic analysis and automatic mitigation.
- MTN's scrubbing centers reroute and clean malicious traffic
- Maintains uptime, service continuity, and customer trust.

## **Backed by Global Threat Intelligence**

- Early detection of zero-day and large-scale attacks.
- Proactive defense based on global traffic trends.

## **Scalable & Flexible Options**

- Suitable for SMEs to large enterprises.
- Supports both cloud-native and on-premises environments.

## **Cost-Effective Protection**

- Prevents financial losses due to downtime, SLA penalties, or reputational damage.

## ***Always-On or On-Demand Defense Deep Visibility & Reporting***



# Support / Assurance Available

Follows the standard call center support process

The services will be managed Internally



# Product Specific Restrictions

## **Customer Responsibility for On-Site Equipment:**

The customer is responsible for the insurance, safekeeping, and physical security of any equipment kept on their premises related to the DDoS protection service.

## **Traffic Thresholds and Usage:**

There may be specified traffic volume thresholds included in the service plan; traffic beyond agreed limits could incur additional charges or affect service quality.

## **Incident Response Times:**

Response and mitigation times are aligned with the service tier purchased.

## **No Liability for Customer-Originated Attacks:**

MTN is not liable for attacks or disruptions caused by customer misconfigurations or vulnerabilities within the customer's own network environment.



# Differentiator

## **Telco-Native Advantage:**

Unlike standalone vendors, MTN embeds DDoS protection directly within its network infrastructure, offering faster threat detection and response without relying solely on third-party transit paths.

## **Integrated Regional Coverage:**

Leverages MTN's extensive African and Middle Eastern network footprint to deliver localized mitigation with low latency and high reliability.

## **Tiered Protection Packages:**

Offers flexible tiers to suit different customer sizes and risk profiles, making it cost-effective and scalable.





**nicyo**  
**gihe**

**Email us at [sales.rw@mtn.com](mailto:sales.rw@mtn.com)**

**Or Call us on 3111**